

Luxury tenders Price List 2024

SUR
MARINE

CELEBRATING 25 YEARS

1999-2024

ITALIANO ENGLISH
FRANÇAIS DEUTSCH

Luxury tenders 2024 collection

IVA inclusa VAT included

Super Tenders **ST** Semirigid with console

| Mod. | Solo battello / Boat only € | hp | Mot. YAMAHA / SUZUKI | cil | c.c. | Kg. mot. | Electric Start | Power Trim | Package incl. motor € |
|------------------------|-----------------------------|----|------------------------------|-----|------|----------|----------------|------------|-----------------------|
| ST 470 PRESTIGE | 27.290 | 70 | Yamaha F 70 AETL 16V | 4 | 996 | 119 | ES | PT | 38.590 |
| | | 40 | Yamaha F 40 G SUPREME | 4 | 996 | 119 | ES | PT | 36.090 |
| | | 40 | Yamaha F 40 HETL | 4 | 996 | 113 | ES | PT | 34.790 |
| | | 40 | Suzuki DF 40 ATL 12V WHITE | 3 | 941 | 104 | ES | PT | 34.790 |
| ST 400 PRESTIGE | 17.390 | 40 | Yamaha F 40 FETL | 3 | 747 | 91 | ES | PT | 24.690 |
| | | 30 | Yamaha F 30 BETL | 3 | 747 | 91 | ES | PT | 24.190 |
| | | 30 | Suzuki DF 30 ATL | 3 | 490 | 74 | ES | PT | 23.690 |
| ST 370 PRESTIGE | 15.190 | 40 | Yamaha F 40 FETL | 3 | 747 | 91 | ES | PT | 22.490 |
| | | 30 | Yamaha F 30 BETL | 3 | 747 | 91 | ES | PT | 21.890 |
| | | 30 | Suzuki DF 30 ATL | 3 | 490 | 74 | ES | PT | 21.490 |
| ST 350 PRESTIGE | 14.190 | 30 | Suzuki DF 30 ATL | 3 | 490 | 74 | ES | PT | 20.490 |
| | | 25 | Yamaha F 25 GETL | 2 | 432 | 64 | ES | PT | 20.290 |
| ST 330 CLASSIC | 11.790 | 25 | Yamaha F 25 GETS | 2 | 432 | 62 | ES | PT | 17.890 |
| | | 20 | Yamaha F 20 GEPS | 2 | 432 | 62 | ES | PT | 17.290 |
| | | 20 | Suzuki DF 20 ATS WHITE | 2 | 327 | 52 | ES | PT | 16.890 |
| ST 310 CLASSIC | 10.190 | 20 | Yamaha F 20 GEPS | 2 | 432 | 62 | ES | PT | 15.690 |
| | | 20 | Suzuki DF 20 ATS WHITE | 2 | 327 | 52 | ES | PT | 15.290 |
| ST 290 CLASSIC | 9.490 | 20 | Suzuki DF 20 ATS WHITE | 2 | 327 | 52 | ES | PT | 14.590 |
| | | 15 | Yamaha F 15 CEPS | 2 | 362 | 56 | ES | PT | 14.290 |
| ST 280 CLASSIC | 8.490 | 15 | Yamaha F 15 CEPS | 2 | 362 | 56 | ES | PT | 13.290 |
| | | 15 | Suzuki DF 15 ARS | 2 | 327 | 47 | ES | - | 12.890 |
| ST 260 CLASSIC | 7.490 | 10 | Yamaha F 9.9 JES | 2 | 212 | 40 | ES | - | 11.390 |
| ST 325 RIDER | 10.490 | 20 | Yamaha F 20 GEPS | 2 | 432 | 62 | ES | PT | 15.990 |
| | | 20 | Suzuki DF 20 ATS WHITE | 2 | 327 | 52 | ES | PT | 15.590 |
| | | 10 | electric REVOLVE 7,2 kW 48 V | - | - | 37 | ES | PT | 22.690 |
| ST 270 RIDER | 7.490 | 15 | Yamaha F 15 CES | 2 | 362 | 55 | ES | - | 11.990 |
| | | 15 | Suzuki DF 15 ARS | 2 | 327 | 47 | ES | - | 11.890 |

new

Accessori non inclusi per motorizzazione elettrica REVOLVE:

BATTERIA Li-Ion 24 V 100 A (kg 14,7 - mm 330x173x212) € 2.580 / BATTERIA Li-Ion 48 V 100 A (kg 25,2- mm 523x240x225) € 4.790

Caricabatteria 24 V 20 A (kg 1,9 - mm 215x118x68) € 530 / Caricabatteria 48 V 30/35 A IP67 (kg 4,6 - mm 210x168x89) € 860

App per smartphone controllo motore incluso AP BOX € 380

Easy Tenders **ET** Semirigid open

| Mod. | Solo battello / Boat only € | hp | Mot. YAMAHA / SUZUKI | cil | c.c. | Kg. mot. | Electric Start | Power Trim | Package incl. motor € |
|-------------------------|-----------------------------|----|----------------------|-----|------|----------|----------------|------------|-----------------------|
| EASY 370 COMFORT | 6.890 | 25 | Yamaha F 25 GWHL | 2 | 432 | 62 | ES | - | 12.210 |
| | | 25 | Suzuki DF 25 AL | 3 | 490 | 62 | - | - | 12.030 |
| | | 20 | Suzuki DF 20 ATHL | 2 | 327 | 55 | ES | PT | 11.390 |
| EASY 320 COMFORT | 5.690 | 20 | Yamaha F 20 GWH | 2 | 432 | 60 | ES | - | 10.240 |
| | | 20 | Suzuki DF 20 AS | 2 | 327 | 44 | - | - | 9.430 |
| EASY 290 COMFORT | 4.890 | 15 | Suzuki DF 15 AS | 2 | 327 | 44 | - | - | 8.490 |
| | | 10 | Suzuki DF 9.9 AS | 2 | 208 | 39 | - | - | 7.990 |
| EASY 270 | 3.990 | 10 | Yamaha F 9.9 JMHS | 2 | 212 | 40 | - | - | 7.190 |
| | | 6 | Suzuki DF 6 AS WHITE | 1 | 138 | 24 | - | - | 5.990 |

Light Tenders **LT** Foldable ultralight

| Mod. | Solo battello / Boat only € | hp | Mot. YAMAHA / SUZUKI | cil | c.c. | Kg. mot. | Electric Start | Power Trim | Package incl. motor € |
|---------------|-----------------------------|-----|----------------------|-----|------|----------|----------------|------------|-----------------------|
| LT 300 | 3.490 | 6 | Suzuki DF 6A S WHITE | 1 | 138 | 24 | - | - | 5.490 |
| | | 6 | Yamaha F 6 CMHS | 1 | 139 | 27 | - | - | 5.390 |
| | | 4 | Suzuki DF 4A S | 1 | 138 | 24 | - | - | 5.090 |
| LT 270 | 3.190 | 6 | Suzuki DF 6A S WHITE | 1 | 138 | 24 | - | - | 5.190 |
| | | 4 | Yamaha F 4 BMHS | 1 | 139 | 27 | - | - | 4.740 |
| LT 240 | 2.990 | 6 | Suzuki DF 6A S WHITE | 1 | 138 | 24 | - | - | 4.990 |
| | | 4 | Yamaha F 4 BMHS | 1 | 139 | 27 | - | - | 4.540 |
| LT 220 | 2.690 | 4 | Yamaha F 4 BMHS | 1 | 139 | 27 | - | - | 4.240 |
| | | 2,5 | Suzuki DF 2.5 S | 1 | 68 | 13,5 | - | - | 3.780 |
| LT 190 | 2.390 | 2,5 | Yamaha F 2.5 BMHS | 1 | 72 | 17 | - | - | 3.560 |
| | | 2,5 | Suzuki DF 2.5 S | 1 | 68 | 13,5 | - | - | 3.480 |

Options

IVA inclusa VAT included

| OPTIONS | Super Tenders | | | | | Easy Tenders | | | Light Tenders |
|--|--------------------|---------------------------------|---------------------------------|---------------------------------|---------------------------------|---------------------------------|---------------------------------|-----------------------|----------------------------------|
| | ST 470 PRESTIGE | ST 400 370 / 350 PRESTIGE | ST 330 / 310 CLASSIC | ST 290 280 / 260 CLASSIC | ST 325 / 270 RIDER | EASY 370 | EASY 320 / 290 COMFORT | EASY 270 | LT 300 270 / 240 220 / 190 |
| Tubolari in HYPALON NEOPRENE ORCA / Boudins en hypalon néoprène ORCA / Tubes made with ORCA hypalon neoprene / Schlauchen als ORCA hypalon Neopren | • | • | • | • | • | • | • | • | • |
| 1 Personalizzazione 2 scritte «T/T Yacht» in neoprene / Personnalisation 2 inscriptions «annexe du...» en néoprène / Customization 2 neoprene labels "T/T name of Yacht..." / Personalisierbare des 2 Logo aus Neopren "T/T Yacht" | € 340 | € 340 | € 340 | € 340 | € 340 | € 340 | € 340 | € 340 | € 340 |
| 2 Pagiolo in teak sintetico / Plancher en teck Synthétique / Synthetic Teak footrest / Synthetisch Teak-Fußboden | • | • | • | • | • | • | • | / | / |
| 3 Volante regolabile in inclinazione / Volant à inclinaison réglable / Adjustable steering wheel / Verstellbares Lenkrad | • | • | • (€ 390 ST310) | € 390 | • (€ 390 ST250) | / | / | / | / |
| 4 Personalizzazione colore tubolari / Personnalisation de la couleur des boudins Customization of colour of tubes / Personalisierbare Schlauch Farbe | € 1.200 | € 950 | € 850 | € 800 | € 800 / 850 | € 950 | € 800 | € 800 | € 700 / 800 |
| 4 Personalizzazione colore tubolari « Carbon » / Personnalisation de la couleur des boudins « Carbon » / Customization of colour of tubes « Carbon » / Personalisierbare Schlauch Farbe « Carbon » | € 2.400 | € 1.800 | € 1.600 | € 1.350 | € 1.350 / 1.600 | € 1.800 | € 1.350 / 1.600 | € 1.350 | € 1.350 |
| Colore Selleria standard / Couleur sellerie standard / Standard saddlery colour / Standard Sattlerfarbe | BEIGE | BEIGE | WHITE AND GREY STRIPES | WHITE AND GREY STRIPES | WHITE AND GREY STRIPES | WHITE AND GREY STRIPES | WHITE AND GREY STRIPES | / | / |
| 5 Personalizzazione selleria / Personnalisation de la sellerie / Customization of upholstery / Personalisierbare Sattlerei | € 400 | € 300 | € 250 | € 220 | € 120 (€ 250 ST325) | € 120 | € 120 | / | / |
| Pannello di controllo retroilluminato con 2 porte USB / Panneau de commande rétroéclairé avec 2 ports USB / Backlit control panel with 2 USB ports / Von hinten beleuchtetes Bedienfeld mit 2 USB | • | • | • | • | • | / | / | / | / |
| Pannello Multifunzione Digitale (speedometro GPS - bussola , contaore, 2USB) Panneau Multifonction Digital (tachymètre GPS- boussole, compteur, 2 USB) Digital Multifunction Panel (GPS Speedometer – compass, hour counter, 2 USB) Digitale Multifunktionsschalttafel (GPS Tachometer-Kompass, Stundenzähler, 2 USB) | / | € 670 | € 670 | / | / | / | / | / | / |
| Luci di cortesia a led / éclairage de courtoisie / Led courtesy lights / Led Innenbeleuchtung | • | • | • | • | • | / | / | / | / |
| 6 Asta estraibile luce d'ancora a led / Feux de mouillage à led (detachable hampe) / Led anchor light (extractable pole) / Ankerlicht (herausnehmbar) | • | • (€ 230 ST350) | • (€ 230 ST310) | € 230 | € 230 | / | / | / | / |
| 7 Musone di prua con teak e luci di navigazione a led / Davier en fibre de verre avec teck et feux de navigation à led / Fiberglass stemhead with teak and led navigation lights / Bugrolle mit Teak und Led Lichte | • | • (€ 690 ST350) | • (€ 690 ST310) | € 690 | € 690 (NO ST 325) | € 640 NO LIGHTS | € 640 NO LIGHTS | € 640 NO LIGHTS | / |
| Roll bar con tendalino integrato e luci a led / Roll bar avec auvent intégré et feux à led / Roll bar with integrated bimini and led lights / Roll bar mit integrierte markise und Led lichter | € 3.190 | / | / | / | / | / | / | / | / |
| Roll bar con luce d'ancora a led / Roll bar avec feux de mouillage à led / Roll bar with led anchor light / Roll bar mit Led Ankerlicht | / | € 770 | / | / | / | / | / | / | / |
| 8 "Bracciolo comfort" con pedanetta in teak e bitta di accosto ribaltabile / "Accoudoir comfort" avec repose-pieds en teck et taquet escamotable / "Comfort armrest" with teak footrests and retractable mooring cleat / "Komfortarmlehne" mit Teakholz-Fußstützen und versenkbarer klampe | • integrated | • integrated | • € 850 (€ 450 ST330) | € 850 | € 850 | / | / | / | / |
| Coppia di pedanette laterali in teak / Repose-pieds lateral avec inserts en teck / Lateral footrests with teak inserts / Fußstützen mit Teak-Einsätze | • integrated | • integrated | • (€ 400 ST310) | € 400 | € 400 | € 400 | € 400 | € 400 | € 400 |
| 9 10 Striscia perimetrale h. 3 cm e maniglie personalizzabili / Bande périmétrique h. 3 cm et poignées personnalisable / Customizable perimetric stripe h.3 cm and handles / Perimetrische Band h. 3 cm und Griffe kundengerecht | • | € 210 | € 210 | € 210 | € 210 | € 210 | € 210 | € 210 | € 210 |
| Cruscotto in pelle bicolore con strumentazione GPS / Tableau de bord en cuir bicolore avec instrumentation GPS / Two-tone leather dashboard with GPS instrumentation / Zweifarbiges Leder-Armaturenbrett mit GPS-Instrumentierung | / | / | / | / | € 840 ST325 | / | / | / | / |
| Telo copri battello "Luxury Surmarine" / Bâche "luxury Surmarine" / Boat cover "luxury Surmarine" / Persenning "luxury Surmarine" | € 850 | € 485 / 435 | € 395 | € 365 | € 365 | € 435 | € 365 / 395 | € 365 | € 365 / 295 |
| Tendalino da sole pieghevole / Auvent repliable / Folding canopy / Klappmarkise | € 530 | € 450 | / | / | / | / | / | / | / |
| Scaletta pieghevole da bagno / Échelle de bain pliable / Folding ladder / Schlauchboot Leiter | • | € 105 | € 105 | € 105 / 95 | € 105 / 95 | € 105 | € 105 / 95 | € 95 | € 95 |
| 11 Portacanna da pesca a incasso / Porte-canne à pêche escamotable encastrable / Rod holder / Integrierte Angelrutenhalter | € 60 | € 60 | € 60 | € 60 | € 60 | / | / | / | / |
| Sistema sollevamento tender regolabile a 3 punti / Suspension réglable à 3 points / Adjustable lifting system with 3 ropes / Verstellbare Gurte zum Heben | / | € 225 4 points | € 145 | € 145 | € 145 (€ 225 ST325) | € 225 4 points | € 225 4 points | € 145 | € 145 |
| Ancora con 40 mt di cima / Ancre avec corde de 40 m / Anchor with 40 mt rope / Anker mit 40 m Seil | € 90 Kg. 4 | € 75 Kg. 2,5 | € 75 Kg. 2,5 | € 65 Kg. 1,5 | € 65 Kg. 1,5 | € 75 Kg. 2,5 | € 75 Kg. 2,5 | € 65 Kg. 1,5 | € 65 Kg. 1,5 |
| Coppia di flaps elastici « autorim Surmarine » / Paire de volets élastiques « auto trim Surmarine » / Pairs of "Surmarine auto trim" elastic flaps / "Surmarine Trimmklappen" AutoTrim | • | • | • | • integrated | • integrated | • | • | • integrated | € 129 |
| Panchetta amovibile / Banquette amovible / Removable bench seat / Abnehmbare Sitz bank | / | / | / | / | / | € 185 | € 185 | € 185 | € 145 |
| Seratoio benzina nel sedile di prua / Réservoir de carburant sur le siège à la proue / Fuel tank in the seat at the bow / Tank im Sitz am Bug | / | / | / | / | / | • 25 lt | • 12 lt | / | / |

Options

IVA inclusa VAT included

| MODELS | Super Tenders | | | | | Easy Tenders | | | Light Tenders |
|--|-----------------|---------------------------|----------------------|--------------------------|------------------------|--------------|------------------------|----------|----------------------------|
| | ST 470 PRESTIGE | ST 400 370 / 350 PRESTIGE | ST 330 / 310 CLASSIC | ST 290 280 / 260 CLASSIC | ST 325 270 / 250 RIDER | EASY 370 | EASY 320 / 290 COMFORT | EASY 270 | LT 300 270 / 240 220 / 190 |
| OPTIONS | € 620 | | | | | | | | |
| Serbatoio benzina da 43 lt con indicatore / Réservoir de carburant 43 litres avec indicateur / Fuel tank 43 lt with indicator / Tank 43 lt mit Blinker | • | / | / | / | / | / | / | / | / |
| Serbatoio doccia con pompa / Réservoir d'eau pour la douche avec pompe / Water tank for the shower with pump / Duschetank mit Pumpe | € 890 | / | / | / | / | / | / | / | / |
| Pompa di sentina / Pompe de cale / Bilge Pump / Bilgenpumpe | • | / | / | / | / | / | / | / | / |
| 12 Garmin Chartplotter ECHOMAP UHD2 52CV Screen 5" cartografia inclusa / map included | € 690 | € 690 | € 690 | € 690 | € 690 | / | / | / | / |
| 13 Stereo Hi Fi Bluetooth MP3 Radio FM DAB colour display 3" | € 590 | € 590 | € 590 | € 590 | € 590 | / | / | / | / |
| 14 Stereo Hi Fi Fusion MS-SRX400 colour display LCD 2,7" Bluetooth/Wi-fi/MP3/AM/FM | € 1.090 | € 1.090 | € 1.090 | € 1.090 | € 1.090 | / | / | / | / |
| Ruote ribaltabili ultraleggere / Roues basculantes ultralégères / Ultra light tilting wheels / Ultra leichte Kippräder | / | / | / | / | / | / | / | / | € 165 |
| 15 "Rapid Surmarine" kit selle rimovibili porta tender / barres amovibles support pour annexe / Removable chocks / Abnehmbar Beiboorthalter für Plattform | / | € 1.490 | € 1.490 | € 1.490 | € 1.490 | € 1.490 | € 1.490 | € 1.490 | / |
| 16 Kit 3 cinghie cricchetto fissaggio tender con base sgancio rapido / Kit 3 sangles avec base à dégageant rapide pour la fixation annexe / 3 ratchet straps kit with quick release for tender fixing / Satz mit 3 Tender-Befestigungsgurten | € 540 | € 540 | € 540 | € 540 | € 540 | € 540 | € 540 | € 540 | / |
| Gancio di prua / Crochets de proue / Bow hook / Bogenhaken | • | • | • | • | • | • | • | • | • |
| Ganci di sollevamento / Crochets de levage / Eyebolts for lifting / Hebehaken | • | • | • | • | • | • | • | • | € 40 |
| Gonfiatore / Gonfleur / Inflator / Luftpumpe | • | • | • | • | • | • | • | • | • |
| Pagaia telescopica / Pagaie télescopique / Telescopic paddle / teleskopische paddel | • | • | • | • | • | / | / | / | / |
| Remi smontabili con scalmiere / Rames démontable avec dame de nage / Demountable oars with oarlock / Abnehmbare Ruder mit Ruderrolle | / | / | / | / | / | • | • | • | • |
| Borsone di trasporto / Sac de transport / Bag for transport / Transporttasche | / | / | / | / | / | / | / | / | • |

• = dotazione di serie - équipement de série - standard equipment - Serienausstattung / = non disponibile - pas disponible - not available - nicht verfügbar

ST 290 CLASSIC
Tubes: carbon military grey
Seats: white and grey
Handles & perim. Stripe: white

Tessuto ORCA per tubolari: finiture e colori disponibili / Finishes and colours of ORCA fabric for tubes

| | | |
|---|--|--|
|  STANDARD Tutti i colori ORCA / All ORCA colours |  FABRIC IMPRESSION Black / Antracite / Ocean blue / Military grey / Army green |  CARBON Black / Antracite / Ocean blue / Military grey / Neptune grey / White |
|---|--|--|

Customizations

IVA inclusa VAT included

Colori Selleria / Saddlery colours



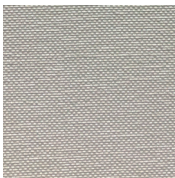
WHITE AND GREY:
STANDARD MOD. ST 250 > ST 330



BEIGE:
STANDARD MOD. ST 350 > ST 470



WHITE AND BEIGE BRUT:
OPTION



TORTORA



PIETRA



CASTORO



BEIGE BRUT



SILVER



TITANIO



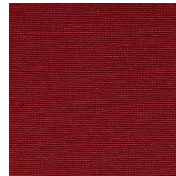
GRAFITE



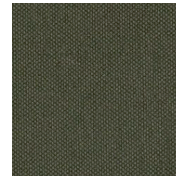
BLACK



ORANGE



WINE



GREEN BOTTLE



BLUE



12



16



13



15



14



Our sales network - Italy

MONCALIERI

SURMARINE

HEADQUARTER



Tyrrhenian Sea



Adriatic Sea

| | | |
|------------------------|-------------------------------|----|
| SANREMO | NAUTISERVICE SRL | 1 |
| MARINA DI VARAZZE | LIGUR NAUTICA SRL | 2 |
| LAVAGNA | GOMMONI E FUORIBORDO | 3 |
| PISA | NAUTICA LUPI | 4 |
| OLBIA | NAUSIKA YACHT SRL | 5 |
| LATINA | BASE NAUTICA SRL | 6 |
| NAPOLI | PERFORMANCE MARE SAS | 7 |
| CASTELLAMARE DI STABIA | NAUTICA SOUTH SRL | 8 |
| PALERMO | MOTOMAR CANTIERE DEL MED. SRL | 9 |
| CATANIA | NAUTICA GLEM | 10 |
| RAGUSA | MEDITERRANEAN YACHT YARD SRL | 11 |

| | | |
|--------------|--------------------------------|----|
| LATISANA | MAREMOTO STYLE | 12 |
| PADOVA | NAUTICA SHARK | 13 |
| CODIGORO | NAUTICA DEL DELTA SRL | 14 |
| FORLÌ | NAUTICA CROCIANI | 15 |
| GABICCE MARE | GIRAMONDO NAUTICA | 16 |
| ANCONA | SEAPOWER | 17 |
| GIULIANOVA | CANTIERE NAVALE GIULIANOVA SRL | 18 |
| FOGGIA | SUD EST CANTIERI | 19 |



Our sales network - world

AUSTRALIA
AUSTRIA
CROATIA
CROATIA
CROATIA
FRANCE
FRANCE
FRANCE
GERMANY
GERMANY
GREECE
MALTA
MONTENEGRO
NORWAY
NETHERLAND
PORTUGAL
SPAIN
SPAIN
SLOVENIA
SWITZERLAND
TURKEY
UAE
UNITED KINGDOM

COOMERA
TROFAIACH
UMAG
Sukošan
TROGIR
CANNES
HYERES
LES BARCARES
MONACO
BAD SALZUFLEN
ATENE
QORMI
PODGORICA
OSLO
KE KATWIJK
PORTIMÃO
MURCIA
MALLORCA
LUBIANA
BERNA
MUGLA
DUBAI
SOUTHAMPTON

RIB FORCE INFLATABLE
NAVIGATION4YOU
MENNYACHT D.O.O.
ROBERT YACHTING D.O.O.
YACHT CENTAR BAOTIC
MIKE MARINE
TI-COYO
BARCARES YACHTING
MYWAY MARINE
BARGEN BOOTE
LABEA YACHTING
STRAND MARINE
SANITEKO GROUP D.O.O.
OSLO BOAT IMPORT
MARITIEM CENTRUM RIJNZICHT
SLICK HULL
MARINA ESTRELLA
PERFORMANCE RIBS
VRTINC NAVTIKA
LIFEBRANDS GMBH
BLUES YACHTING
WATERX
MCC MARINE



Per maggiori informazioni
sui nostri rivenditori consultate il sito.
*For any further information
about our sales network please consult our website.*

www.surmarine.it



Tutti i prezzi sono IVA inclusa, trasporto escluso. Il presente listino è valido per l'Italia e può subire variazioni in altre nazioni.
DOTAZIONI DI SERIE: fare riferimento anche al catalogo in vigore. I PACKAGE con motore fuoribordo sono forniti completi di batteria e cavi telecomando. La casa costruttrice si riserva il diritto di modificare prezzi e caratteristiche senza preavviso.

GARANZIA: i battelli Surmarine sono garantiti 2 anni. Per il motore fuoribordo vale la garanzia del costruttore.

All prices VAT included, delivery excluded. Prices are valid for Italy and may change in other countries. STANDARD EQUIPMENT: refer also to general catalogue. PACKAGES including outboard motor are supplied complete of battery and cables. The boat builder has the right to change features and prices without advice. WARRANTY: Surmarine boats are covered by 2 Years Warranty. For the outboard motor is valid the manufacturer warranty.

our partners:



HIGH QUALITY
HYPALON NEOPRENE



St. Genova, 62 – 10024 Moncalieri (TO) Italia

Tel +39 011 6470475 / Fax +39 011 2075397

surmarine@surmarine.it

www.surmarine.it



scarica il catalogo
download the brochure

